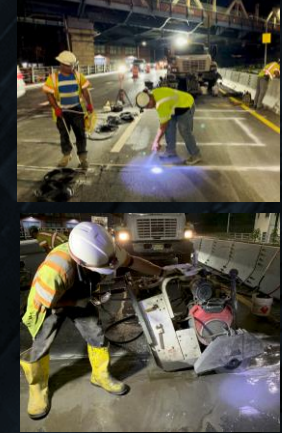


UTC-Industry-Agency Testbed

BQE SMART URBAN ROADWAY TESTBED

This testbed collects real-time data on truck loads using an advanced weigh-in-motion (WIM) sensor deployed on a live-section of expressway to measure the impact of overweight trucks

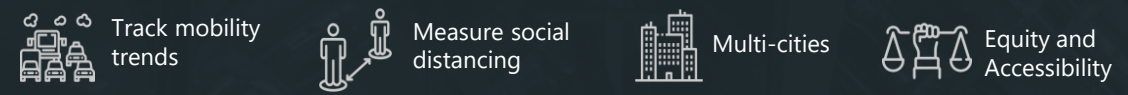
- Expressway section is a deteriorating cantilevered structure
- WIM Technologies from various vendors were deployed and calibrated
- WIM Installation conducted with NYCDOT



Response to the COVID-19 Pandemic's impact on Transportation

C2SMART PUBLIC COVID-19 DATA DASHBOARD

An all-in-one data dashboard was built with interactive analytics and visualization of various mobility and sociability data sources to monitor transportation trends in the wake of COVID-19



c2smart.engineering.nyu.edu/covid-19-dashboard

Mobility Board
All-in-one Dashboard for Mobility Trends

Sociability Board
Measuring Social Distancing Based on Computer Vision

Main St @ Roosevelt Ave
Facing South 06/18/2020 02:00:28 PM

Analysis: 1 social distance violations detected.

COVID-19 Travel Survey
For Different Demographics

Multi-agent Simulation
To predict COVID-19 Impacts

Research Highlights

Street-Level Flooding Platform
Sensing and Data Sharing for Urban Accessibility and Resilience

USDOT New York City Connected Vehicle Pilot

Test CV app to aid people with visual disabilities & evaluate overall pilot performance

NYSDOT Statewide Open Source ATMS Software Research

Support the evolving TSMO program

Cooperative Perception with Edge AI for Driving Assistant

Fuses real-time data of on-board sensors and roadside units to enhance driving assistance in road traffic and parking scenarios

LOS Analysis and Performance Measurement System for Parking

Energy Harvesting Self-powered Sensors for Smart Infrastructure

Capacity Building & Technology Transfer

Student Learning Hub *New!*

Free online skills courses open to all consortium member students - Planned expansion to other schools and public colleges

Check out our 2019-2020 Annual Report

Common Innovation Platform (CIP)

C2SMART's CIP is a collaborative project workspace and task tracking tool for the Center and researchers in the consortium:

- Two-way interaction between researchers & tools using API capabilities
- Interconnected databases and repositories
- Automated project tracking